



MEDICAL CATALOG

Adjustable chest straps

MegoAfek^{AC}_{LTD}

FOR BETTER
LIFE
.....
MEDICAL CATALOG
.....



Mego Afek Medical Division - Developers and producers of medical devices for the support and treatment of lymph disorders, Angio vascular diseases, circulatory disorders and deep vein thrombosis prevention; leading brand names are: Lympha Press, Optimal, Phlebo Press, Angio Press, Phlebo Press DVT, DVT-FT.

Mego Afek Medical Aesthetics Division - Developers and producers of the **BALLANCER** - aesthetic appliances for the treatment of cellulite, swollen feet, arm flabbiness, firming and trimming of skin, aesthetic lymph drainage.

Mego Afek R&D HF Welding Division - Innovative technologies for high frequency welding. High tech weldings are used in Mego Afek compression garments (Lympha Press and Ballancer) and other industries: food, chemical, agriculture.

Facilities - 3,000 square meters of manufacturing, engineering and logistics. Number of employees: 90

Ownership - Mego Afek AC Ltd. is a private company.

Major Distributors:

- **Lympha Press USA Inc.**
NJ 07726, **USA**
- **Villa Sana GmbH & Co. medizinische Produkte KG**
91798 Weiboldshausen, **Germany**
- **Rolf Davidsen Helseagenturer A/S**
4291 Kopervik, **Norway**
- **CINCOS : Medical & Esthetica**
08038 Barcelona, **Spain**
- **Cirurgia Montserrat : Medical Supplies**
09636-000 Sao Paulo, **Brazil**



Complies and approvals:

Our products are CE, FDA, JGMP, CSA & CUL approved and the quality system complies with ISO 13485:2003 and CAN / CSA ISO 13485:2003

Index:

Company Profile.....	2-3
Phlebo Press®.....	4-5
Lympha Press® Optimal	6-7
Comfy® arm sleeve	8
LymphaPod®	9
Lympha Press® Plus	10-11
Lympha Press® Mini.....	12-13
Lympha Press® Wave	14
Lympha Press® 103.....	15
Phlebo Press® DVT.....	16-17
Angio Press®	18-19
Garments & Sleeves.....	20-21
Contraindications.....	22
Medical Studies	23

Icons:



Professional
& Hospital



Rehabilitation
& Clinics



Home Care

PHLEBO PRESS®

Use In:



Phlebo Press® is a sequential pneumatic compression system specially designed for efficient reduction and management of peripheral edema, such as lymphedema and ulceration associated with venous insufficiency.

Phlebo Press® is designed to give quality treatment at home. It is easy to use and encourages patient compliance.

Phlebo Press® Garments feature unique overlapping 4 cell design to provide smooth and effective treatment.

Phlebo Press® belongs to the world famous Lympha Press® family of devices, produced and serviced by Mego Afek distributors worldwide.

Features:

- Fully variable pressure range 20 to 80 mmHg.
- Treats up to two limbs simultaneously.
- Easy reading controls (Pressure, Pause Time).
- Can be used on legs or arms.
- Compression garments consist of four fully overlapping compression cells to provide fully sequential lymph drainage.
- User friendly.
- Quiet and reliable.
- Lightweight and portable.

Indications:

- Insufficiency of venous blood return
- Relief for varicose veins condition.
- Healing of venous stasis ulcers.
- Lymphedema of legs and arms.
- Post-mastectomy arm edema.
- Promotion of wound recovery.
- Relief from muscular and nervous pain.
- Relief of discomfort from leg fatigue.

Contraindications: see page 22

Phlebo Press®

Technical specifications	
Model	701
Cycle	Sequential
Pressure Range	20-80 mmHg
Size	10x26x13cm
Weight	2.3kg
Electrical	230V / 115V 50/60 Hz
Garment choice and sizes - see separate garment catalog	

PHLEBO PRESS®

The leading basic device
for long years of home care



Phlebo Press® with full leg sleeve



Phlebo Press® with arm & hand sleeve

LYMPHA PRESS OPTIMAL[®]

Use In:



New in Lympha Press family:

Based on the reliable and durable Lympha Press[®] MINI line, the **Lympha Press[®] Optimal** is a pressure controlled device and features **Pretherapy** treatment also for home care patients.

The **Pretherapy** Treatment is a gentle massaging of the proximal lymphatics, with the purpose of easing the lymph liquids transit, based on MLD (manual lymph drainage) procedures.

The **Pretherapy** starts the treatment at the proximal end of the treated limb. **Lympha Press[®] Optimal** then moves on to the main treatment, either sequential buildup pressure or Wave Peristaltic massage.

New Features:

- Pressure controlled device
- Pretherapy cycle preceding all treatments.
- Pretherapy cycle override option.
- Remote control pause switch.
- Informative LCD screen.
- Quick-connect connector for hose bundles.

Other Features:

- Up to 24 overlapping air cells per compression garment.
- Fully variable pressure range 20 to 90 mmHg.
- User friendly - easy to use.
- Quiet.
- Compact, easy to store.
- Sturdy and reliable.
- Portable.
- Can treat up to two limbs simultaneously
- Compatible with most Lympha Press garments.
- Easy reading controls.

Lympha Press Optimal[®]

Technical specifications:	
Model	1201
Cycle	Sequential Multi Cycles
Pressure Range	20-90mmHg
Size	14.5x38.5x30.5cm
Weight	6.1kg
Electrical	230V / 115V 50/60 Hz

Garment choice and sizes - see separate garment catalog

LYMPHA PRESS® OPTIMAL

Comprehensive
Treatment **at Home**



Lympha Press® Optimal with medical compression pants

Lympha Press® Optimal models:

Features the following treatment cycles:

1. Pretherapy Cycle
2. Lympha Gradient Cycle (sequential)
3. Wave® Cycle (peristaltic dynamic compression)

The Gradient feature is built into the device treatment cycles.

The device ensures the pressure applied is gradually lowered as the compression sequence advances up the limb. The gradient steps and pressures can be calibrated on the device or with the help of an easy to use PC software.

Indications:

As on Lympha Press Mini (pg 12)

Contraindications: see page 22

NEW! COMFY[®] ARM SLEEVE

Use In:



The Comfy[®] Arm Sleeve 1-75 offers a new and greatly improved way to treat lymphedema in the upper limbs.

The treated area does not stop at the upper arm but now includes the armpit as well as the upper shoulder, one side of the back, chest and abdomen.

To assure effective treatment and results it is recommended to use the Comfy Arm Sleeve with the Lympha Press[®] Optimal device.



NEW! LYMPHAPod®

Use In:



A unique garment for the treatment of obese lymphedema patients.

For the treatment of lymphedema, venous insufficiency, venous stasis ulcers, traumatic edema, and dysfunction of the muscle pump.



The LymphaPod® garment used with the OptiPod® device



The LymphaPod® garment

LymphaPod® is the only pneumatic compression system designed specifically for the morbidly obese.

- Revolutionary, innovative construction. (Patent Pending)
- Designed especially for patients with limited mobility.
- Unique “sleeping bag” design for easy donning and doffing.
- Treats the entire lower body, including hips, abdomen and genital areas.
- Lympha Press sequential massage, with fully adjustable pressure for patients with focal discomfort.
- One size fits all, from 150 to 300+ kilograms!!

LYMPHA PRESS® PLUS

Use In:



Lympha Press® Plus is specially designed for medical professionals. It combines digital technology with the therapist's touch.

Create individualized treatments with following cycles:

1. **Pre-treatment cycle:** Designed in accordance with the principles of manual lymph drainage, this unique cycle helps empty the proximal lymphatics prior to treatment.
2. **Sequential compression:** Highly effective pneumatic massage with up to 24 compression cells for maximum results and comfort.
3. **Peristaltic compression:** Gentle "wave" cycle with variable speed control, for treatment of venous disorders and lymphedema with local discomfort.
4. **Ballancer® cycle:** Fast peristaltic cycle that gives a relaxing massage while it stimulating circulation and lymphatic return.
5. **Calibrated gradient pressure cycle:** 12 zone gradient pressure calibrated at the pump.

Lympha Press® Plus enables individual pressure settings for each of the 12 cells.

Indications:

- Lymphedema of legs and arms.
- Post-mastectomy arm edema.
- Healing of venous stasis ulcers.
- Promotion of wound recovery.
- Relief from muscular and nervous pain.
- Relief of discomfort from leg fatigue.
- Post-mastectomy lymphedema with scar tissue.
- Post-traumatic edemas.
- Post-traumatic lymphedema.
- Ulceration lymphedema with local discomfort.

Contraindications: see page 22

Lympha Press® Plus

Technical specifications	
Model	1033
Cycle	Multi Cycles
Pressure Range	20-130 mmHg
Size	14x41x34cm
Weight	10kg
Electrical	230V / 115V 50/60 Hz
Garment choice and sizes - see separate garment catalog	

LYMPHA PRESS®
PLUS
Maximum Treatment at
Your Fingertips



Lympha Press® Plus with medical compression jacket

LYMPHA PRESS® MINI

Use In:



Lympha Press® Mini

Treating lymphedema correctly means a lifelong commitment to a regimen of care. Home therapy with the Lympha Press® Mini is easy and effective, saves clinic visits, and increases patient compliance for better treatment results.

Indications:

- Lymphedema of legs and arms.
- Post-mastectomy arm lymphedema.
- Healing of venous stasis ulcers.
- Promotion of wound recovery.
- Relief from muscular and nervous pain.
- Relief of discomfort from leg fatigue.

Contraindications: see page 22

Features for Lympha Press® Mini

- Up to 24 overlapping pressure cells.
- Fully variable pressure range 20 to 80 mmHg for safe use also at home.
- User friendly - easy to use.
- Quiet.
- Compact, easy to store.
- Sturdy and reliable.
- Portable.
- Can treat up to two limbs simultaneously.
- Compatible with comprehensive range of quality garments.
- Easy reading controls (Pressure and Treatment duration).

Lympha Press® Mini

Technical specifications	
Model	201
Cycle	Sequential
Cycle Time	30 sec
Pressure Range	20-80 mmHg
Size	14.5/38.5/30.5cm
Weight	5.1kg
Electrical	230V / 115V 50/60 Hz
Garment choice and sizes - see separate garment catalog	

LYMPHA PRESS® MINI

Hospital quality
Treatment at Home



Lympha Press® Mini with “Comfy” Leg Sleeve

LYMPHA PRESS® WAVE

Use In:



Lympha Press® Wave

Using its unique peristaltic cycle,

Lympha Wave™ encourages venous and lymphatic return, and is highly recommended for post-traumatic edema, edema of venous origin, leg ulcers, wound recovery and post-operative venous ligation or stripping. Compression is applied sequentially to all parts of the limb.

The ideal cycle for individuals with localized discomfort.

Indications:

- Post-mastectomy lymphedema with scar tissue.
- Post-traumatic edemas.
- Post-traumatic lymphedema.
- Ulceration.
- Lymphedema with local discomfort from continuous pressure.

Contraindications: see page 22

Lympha Press® Wave

Technical specifications:

Model	301
Cycle	Sequential peristaltic
Cycle Time	30 sec
Pressure Range	20-80 mmHg
Size	14.5x38.5x30.5cm
Weight	5.1kg
Electrical	230V / 115V 50/60 Hz
Garment choice and sizes - see separate garment catalog	

LYMPHA PRESS® 103

Use In:



Lympha Press® 103

The most powerful compression unit in the Lympha Press family.

The Lympha Press®103 is used when intensive lymph drainage is required.

Pressure ranges from 20 to 180 mmHg.

All treatments must be under close supervision of trained medical staff.

The device is sturdy, durable and can be used for many years, also in remote field clinics.

Lympha Press®103 can inflate most of Mego Afek compression garments.

Features:

- Up to 24 overlapping pressure cells.
- Fully variable pressure range 20 to 180mmHg for safe use also at home.
- User friendly - easy to use.
- Quiet.
- Compact, easy to store.
- Sturdy and reliable.
- Portable.
- Can treat up to two limbs simultaneously.
- Compatible with comprehensive range of quality garments.
- Easy reading controls (Pressure and Treatment duration).

Indications:

- Severe Lymphedema of legs and arms.
- Post-mastectomy arm lymphedema.
- Elephantiasis.
- Promotion of wound recovery.
- Relief from muscular and nervous pain.

Contraindications: see page 22

Lympha Press® 103

Technical Elpha:

Model	103
Cycle	Sequential
Cycle Time	30 sec
Pressure Range	20-180 mmHg
Size	20/34/25 cm
Weight	7.15 kg
Electrical	230V / 115V 50/60 Hz
Garment choice and sizes - see separate garment catalog	

PHLEBO PRESS® DVT

Use In:



Operating rooms
Intensive Care Units
Non walking patients



Phlebo Press® DVT mimics the action of the muscle pump and the foot pump on the veins of the leg. Its unique design provides maximum blood flow enhancement.

Features:

- Optimal compression cycle for maximum blood transition in deep veins.
- Four compression cells per limb provide greater directionality of flow and enhance patient comfort.
- Calf-length sleeves with plantar pressure to mimic both foot and muscle pumps, for maximum flow enhancement.
- Comfortable to wear, easy to remove.
- Pleasant and smooth massage action.
- Audio & visual alarm.
- Easy operation and monitoring.
- Choice of washable or disposable sleeves.

Indications:



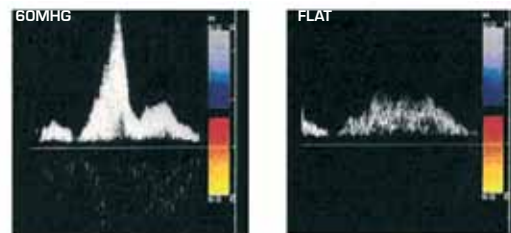
For Hospital uses:

Prevention of Deep Vein Thrombosis- Intraoperative, postoperative, and during recovery period.



For Home Care:

Non walking patients - to ensure venous blood return



Phlebo Press® DVT - proven enhancement of venous blood return (ultrasonography at 0 and 60 mmHg)

⚠ To be used strictly in Hospitals or under Medical supervision.

★ **NEW**

Now available! Disposable Thigh & Calf DVT compression sleeves.

Phlebo Press® DVT

Technical specifications:

Model	601
Cycle	Sequential
Cycle Time	1 min approx
Pressure Range	50-60 mmHg
Size	10x13x26cm
Weight	2.3kg
Electrical	230V / 115V 50/60 Hz
Garment choice and sizes - see separate garment catalog	

**PHLEBO PRESS®
DVT**
Effective, Comforting,
Silent



Phlebo Press® DVT with Single-Patient Use Sleeves

ANGIO PRESS®

Use In:



Angio Press® device is a home-care unit indicated for the enhancement of blood flow in patients diagnosed with Peripheral Arterial Disease (PAD, PAOD) Fontaine stages 2, 3. The intermittent sequential massage applied by Angio Press® is smooth, painless and comfortable. The cells inside the compression garment(s) are sequentially inflated, from the distal to the proximal part of the leg. Once the cycle is complete, pressure is maintained for 4 seconds and then all cells deflate simultaneously.

Contraindications

Using Angio Press® is not recommended in the following conditions:

- Known or suspected DVT (Deep Vein Thrombosis)
- Thrombophlebitis
- Recent skin grafts
- Stroke, myocardial infarction or other acute vascular events three months prior to treatment
- Mild/severe congestive heart failure
- Less than three months after failed crural or pedal bypass
- Huge Varicose veins
- Dermatitis

Angio Press®

Technical specifications:

Model	802
Cycle	Sequential
Cycle Time	1 min approx
Pressure Range	80-120 mmHg
Size	133x142x292 mm
Weight	2.8kg
Electrical	230V / 115V 50/60 Hz
Garment choice and sizes - see separate garment catalog	

ANGIO PRESS®
Effective, Comforting,
Silent



The Angio Press® sleeve



The Angio Press® sleeves

MEGO AFEK GARMENTS & SLEEVES*



Lympha Press® Pants



Lympha Press® Jacket



Full Leg Velcro Sleeve



Zipper® Arm/Leg Sleeve



Phlebo Press® Leg Sleeve



Phlebo Press® Arm Sleeve



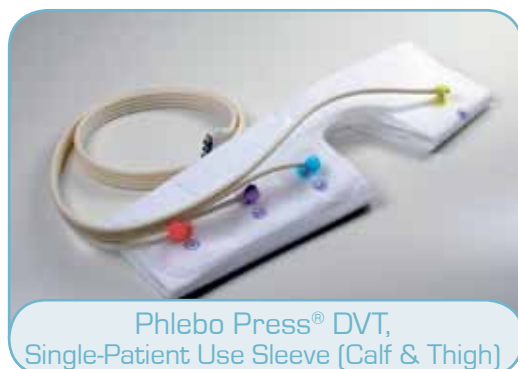
Comfy® Arm Sleeve



LymphaPod®



Comfy® Leg Sleeve



Phlebo Press® DVT,
Single-Patient Use Sleeve (Calf & Thigh)



Phlebo Press® DVT,
Reusable (Calf & Foot)



Angio Press® Leg Sleeve

* For more garment types sizes, and available expanders, please see our **garment catalog**. Alternatively, please log into our website at www.megoafek.com under “Medical Division”

CONTRAINDICATIONS



Important Note:

Always use Mego Afek products after consulting your physician.

If you suffer from one of the following conditions, the use of Mego Afek products **MUST** be approved and monitored by your physician:

- In the presence of any pain or numbness
- Severe arteriosclerosis or other ischemic vascular diseases
- Known or suspected Deep Vein Thrombosis (DVT) or Thrombophlebitis
- Gangrene
- Dermatitis
- Untreated or infected wounds
- Recent skin grafts
- Unbalanced Cardiac or kidney insufficiency
- Severe inflammation of treated limb

Zelikovski A et al. Lympha-Press:

A new pneumatic device for the treatment of lymphedema of the limbs.

Lymphology

Zelikovski A et al..

The “Lymphapress” - a new pneumatic device for the treatment of lymphedema: Clinical trial and results. Folia

Angiologica

Partsch H et al.

Experimental investigations on the effect of a pressure wave massage apparatus (Lympha-Press) in lymphedema.

Phlebologie und Proktologie

Gruffaz J.

One year's experience of treatment of lymphoedema of the limbs with the Lympha-Press.

Phlébologie

Zelikovski A et al.

The sequential pneumatic compression device in surgery for lymphedema in the limbs. Journal of Cardiovascular Surgery
Richmond DM et al.

Sequential pneumatic compression for lymphedema: A controlled trial. Arch Surg

Zelikovski A et al.

The “Lympha-Press” intermittent sequential pneumatic device for the treatment of lymphoedema: five years of clinical experience. Journal of Cardiovascular Surgery

Zelikovski A et al.

Non-operative therapy combined with limited surgery in management of peripheral lymphedema. Lymphology

McLeod A.

Home therapy for lymphedema.

Home Health Care Summer

McLeod A et al.

A clinical report on the use of three external pneumatic compression devices in the management of lymphedema in a paediatric population. Physiotherapy Canada

Pappas CJ et al.

Long-term results of compression treatment for lymphedema. J Vascular Surgery

González Viejo MA et al.

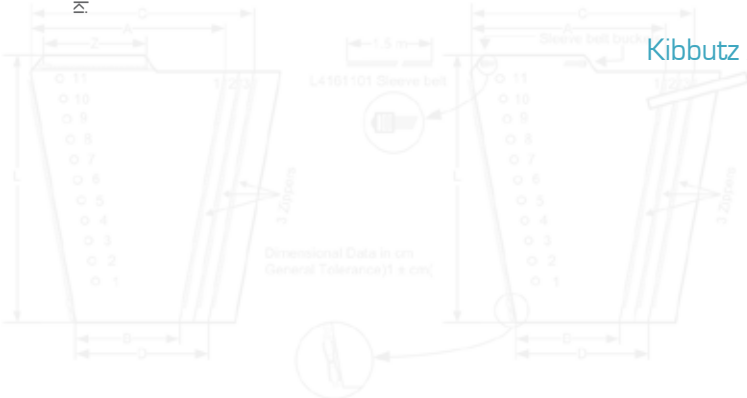
Efectividad del tratamiento del linfedema de extremidad superior mediante presoterapia neumática secuencial multicompartimental. Rehabilitación (Madr)



MEGO AFEK

Kibbutz Afek 30042 Israel | T. +972-77-908-4277 | F. +972.4.878.4148
www.megoafek.com | info@megoafek.com

Compression Sleeves with 3 Zippers



Catalog No.	Sleeve No.	Circumference Range				Sleeve Length	No. of Cells	Shoulder Attach. Zipper	Weight (Kg.)
		Min	Max	Min	Max				

